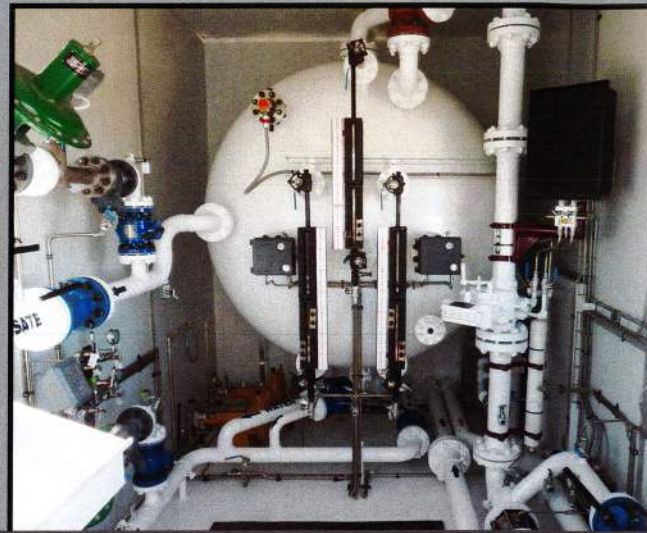


VERSATILE

ENERGY SERVICES

VALUE ADDED SERVICE



VERSATILE PRODUCTION TESTING UNIT

4 PHASE SOUR SERVICE HORIZONTAL (TWO WEIRS)

OPERATING CAPACITY - 4M³ - 18M³

BUILT TO N.A.C.E. MR-0175-90

VALVES AND PIPING: FLANGED, WELDED

WORKING PRESSURE: 1379 - 9928 KPA (200 - 1440 PSI)

GAS CAPACITY: 20 - 2000 10³ M³/DAY

LIQUID CAPACITY: 500 - 10,000 M³/DAY

Please call to set up pricing that best suits your needs.



We strive for effective application of leading technologies.

1-877-358-8853

Versatile Energy Services Ltd.

11 Erickson Crescent Sylvan Lake, Alberta, Canada T4S 1P5

Phone: 1-877-358-8853 • Fax: 403-887-0343

Email: info@versatileenergy.com